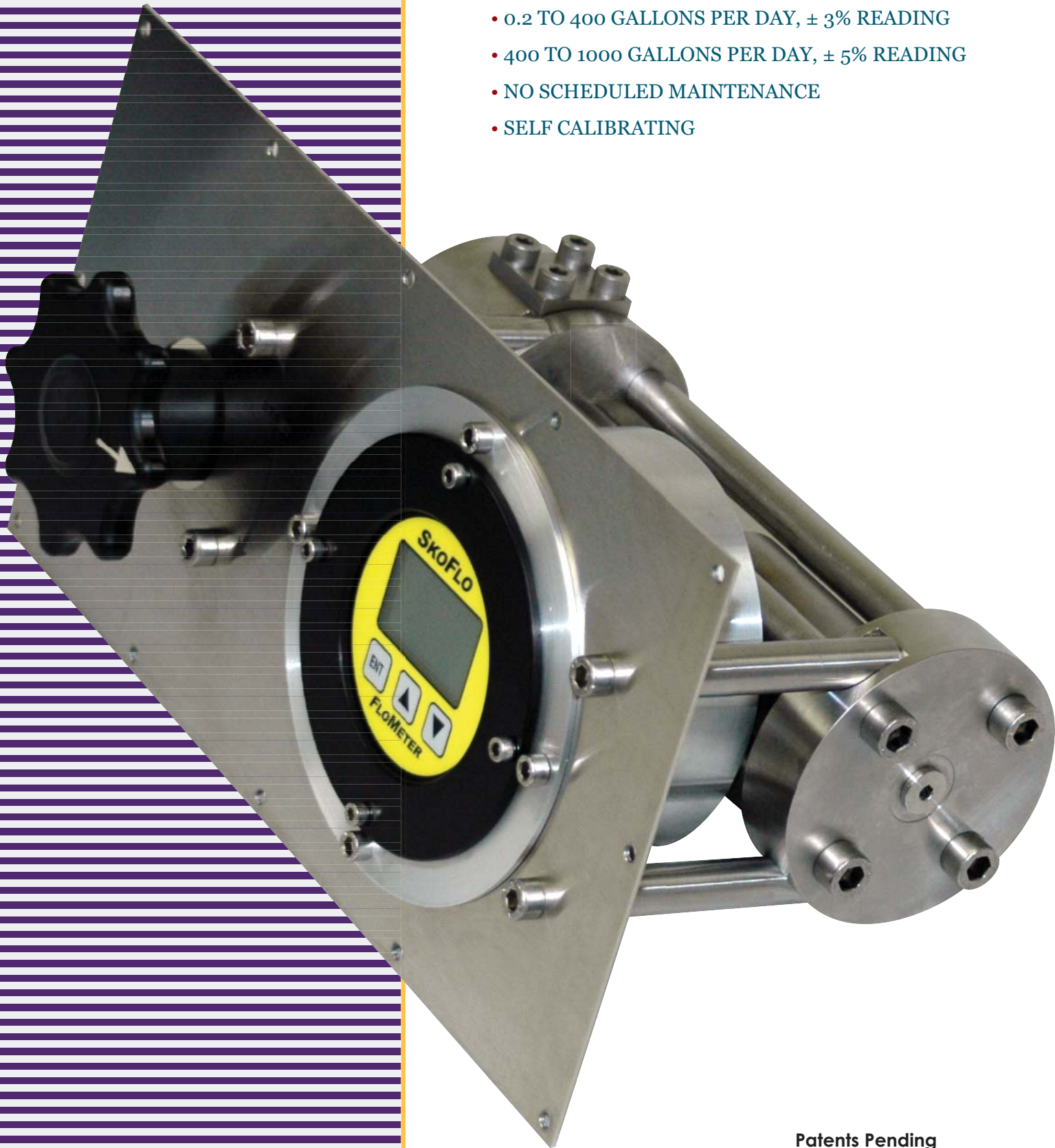


SKOFLO

HIGH TURNDOWN FLOW METER

- 0.2 TO 400 GALLONS PER DAY, \pm 3% READING
- 400 TO 1000 GALLONS PER DAY, \pm 5% READING
- NO SCHEDULED MAINTENANCE
- SELF CALIBRATING



Patents Pending

SKOFLO INDUSTRIES, INC.

WHY USE THE *SKOFLO* POSITIVE DISPLACEMENT FLOW METER?

Positive displacement flow measurement has proven success as the standard for meter provers. SkoFlo's 'launched piston' flow meter uses positive displacement and incorporates additional features:

- Flow rate as low as 0.2 gallons per day.
- Extreme accuracy: 3 percent of reading. 1 gallon per day, for example, translates to an accuracy within +/- 0.03 gallons per day.
- High pressure applications: up to 10,000 psi.
- Low pressure drop: only 100 psi required to operate the flow meter.
- High Turndown: from 0.2 to 1000 gallons per day.
- Quick measurements: only 10 seconds to measure a 3 gallon per day flow rate.
- Fail safe. SkoFlo's design allows flow to continue even if the meter ceases to operate.
- Easy operation: Push one button and turn handle to launch piston.

High turndown, extreme accuracy, and high pressure capacity are the main reasons to choose the SkoFlo positive displacement flow meter.

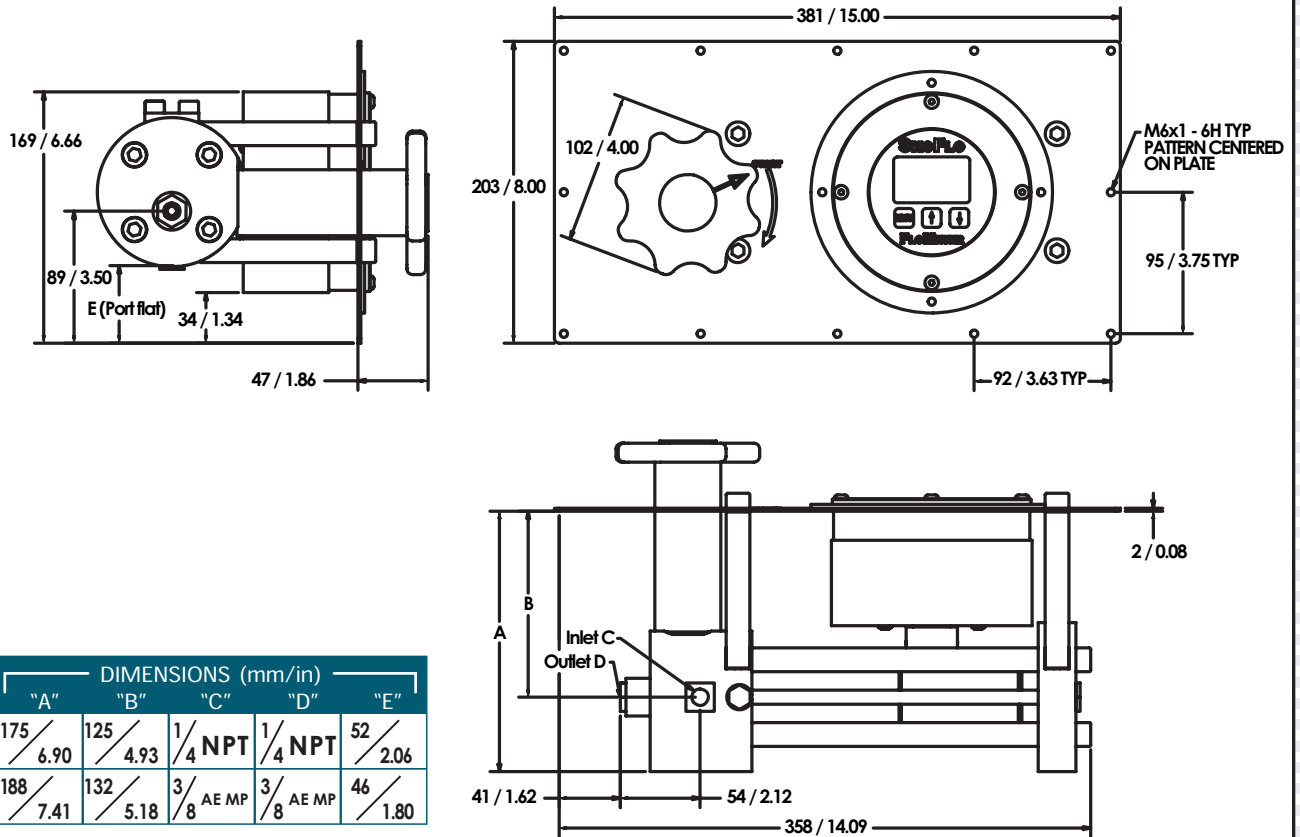
INTENDED USE

SkoFlo flow meters were created to compliment SkoFlo rate controllers. These rate controllers automatically maintain a constant flow through well pressure changes. Adding a flow meter allows the user to accurately set and test the rate controllers. A typical SkoFlo rate controller installation will share one flow meter between several rate controllers. Until now, an accurate flow meter with capacity to measure below 10 gallons per day at pressures up to 10,000 psi has been nonexistent.

BATTERY OR EXTERNAL POWER

The SkoFlo flow meter is an intrinsically-safe device usable in potentially explosive atmospheres. Typical power consumption is less than 500 mw during operation and less than 3 μ w in standby. Power may be supplied externally by the user or internally by a special SkoFlo battery pack. The non-rechargeable battery pack expected life is 5 years depending on usage and flow rates; lower flow rates take longer to measure. See BATTERY LIFE graph for more information.

THE METER



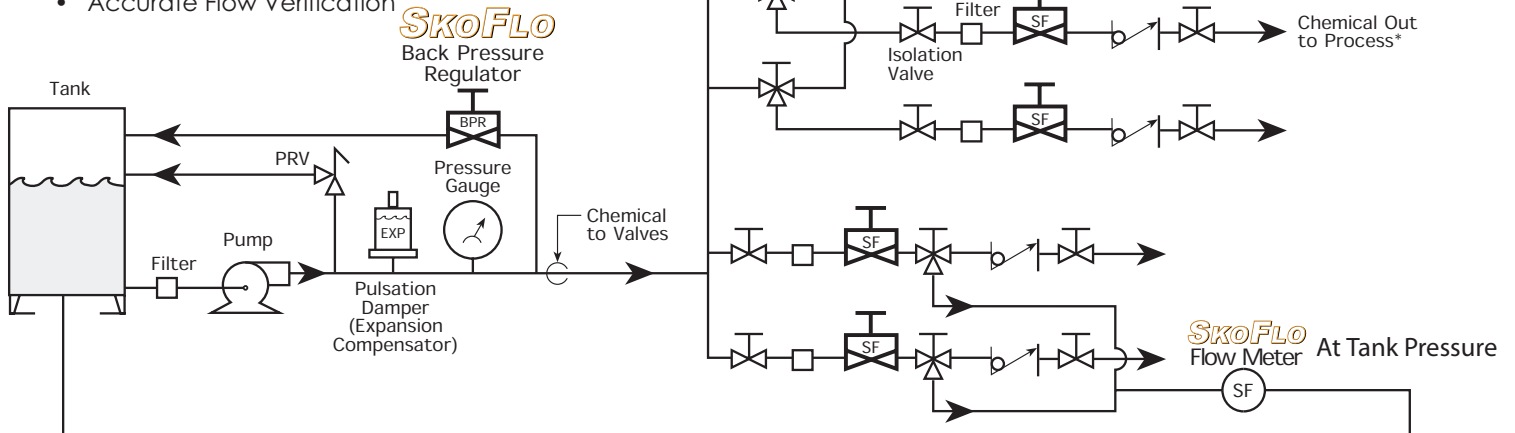
MODEL	DIMENSIONS (mm/in)				
	"A"	"B"	"C"	"D"	"E"
PDFM-5000A	175 / 6.90	125 / 4.93	1/4 NPT	1/4 NPT	52 / 2.06
PDFM-10000A	188 / 7.41	132 / 5.18	3/8 AE MP	3/8 AE MP	46 / 1.80

Consult factory for current outline drawings

THE SYSTEM

Skoflo Multi-Point System Utilizing a Positive Displacement Pump and Meter

- A single pump for multi-location injection program
- Local chemical injection flow controllers for individual rate control
- No pneumatic or electric power sources required for control
- Continuous flow
- Accurate Flow Verification

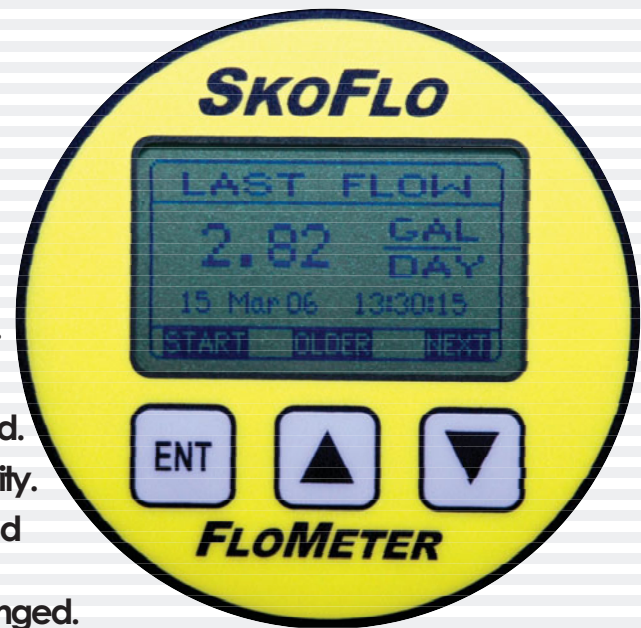


*Any number of injection points can be served.

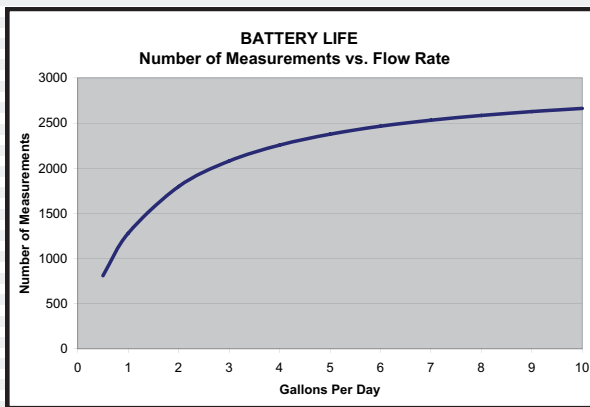
Notes: For systems **not** using a positive displacement pump the pulsation damper and back pressure regulator are not required.

FEATURES

- Intrinsically safe: classification EEx ia IIC T4 ref EN 50020:2002
- Easy on: push any button to activate display.
- Easy operation: push start [ENT] and turn handle.
- Selectable flow rate units: gallons, liters, days, hours, minutes.
- Date and time: internal clock to time stamp measurements.
- History: display most recent measurements – up to 500 saved.
- Self calibration: use diagnostic screen to check meter integrity.
- Diagnostics screen: shows temperature, voltage, current, and piston position.
- Low battery indicator: flashes when battery needs to be changed.
- Easy battery access: battery packs can be accessed from the front and replaced in potentially explosive atmospheres.
- Remote power: batteries can be replaced with resistor limited external power.
- Operational temperature range: -18 to 55°C (0 to 130°F)
- Sealed: for wash down.

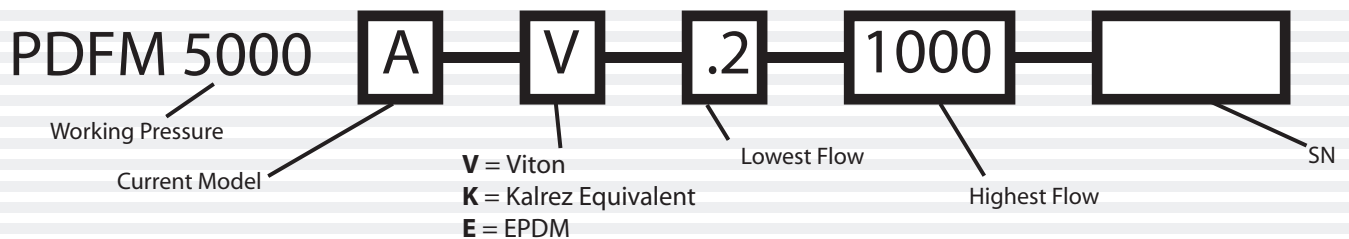


BATTERY LIFE



Expected battery life is 5 years, depending on usage. The graph shows the typical number of measurements possible from a single battery pack at different flow rates. Lower flow rates take longer to measure, thus the number of measurements is less.

HOW TO ORDER - NAMEPLATE MARKING



*Consult Factory for Remote Operation

SKOFLO INDUSTRIES, INC.

www.skoflo.com

Patents Pending
Ver. 060713

PO BOX 1728, 14241 NE 200th , Bldg A, Suite B
Woodinville Wa, 98072 USA
425.485.7816 FAX 425.368.1696