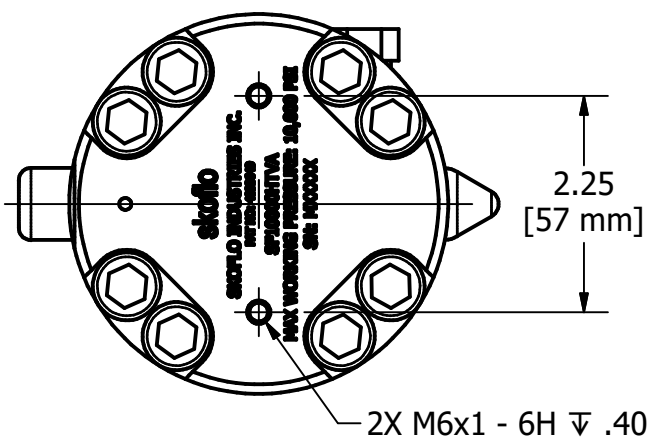
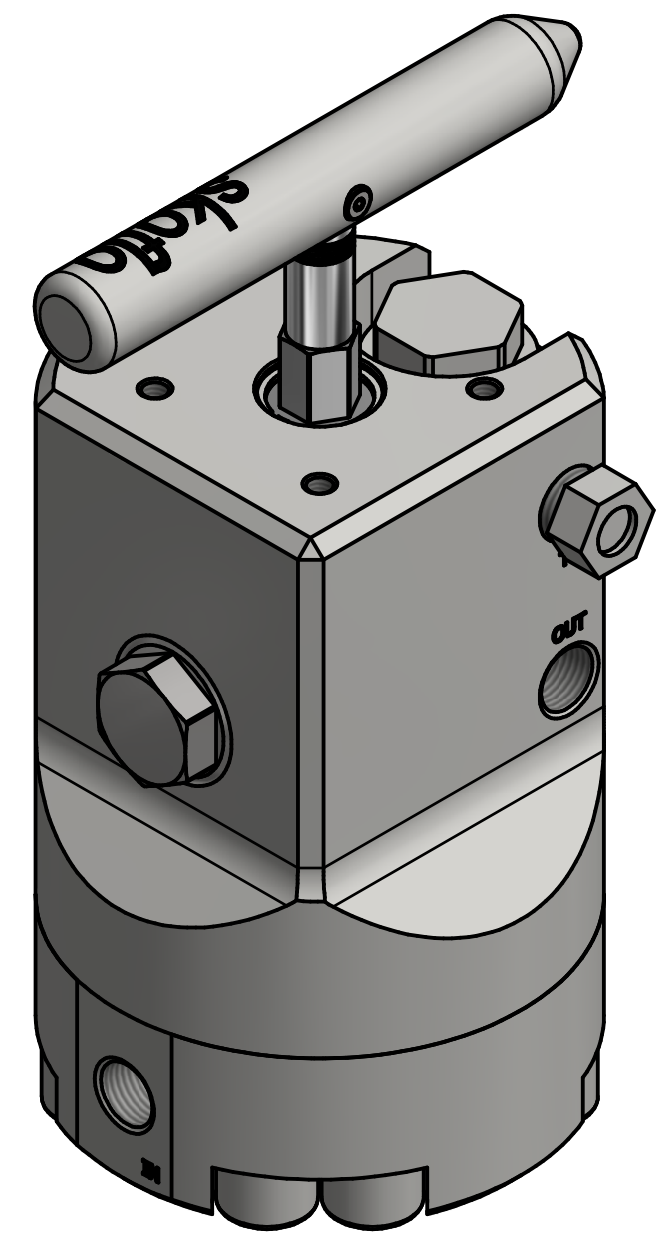
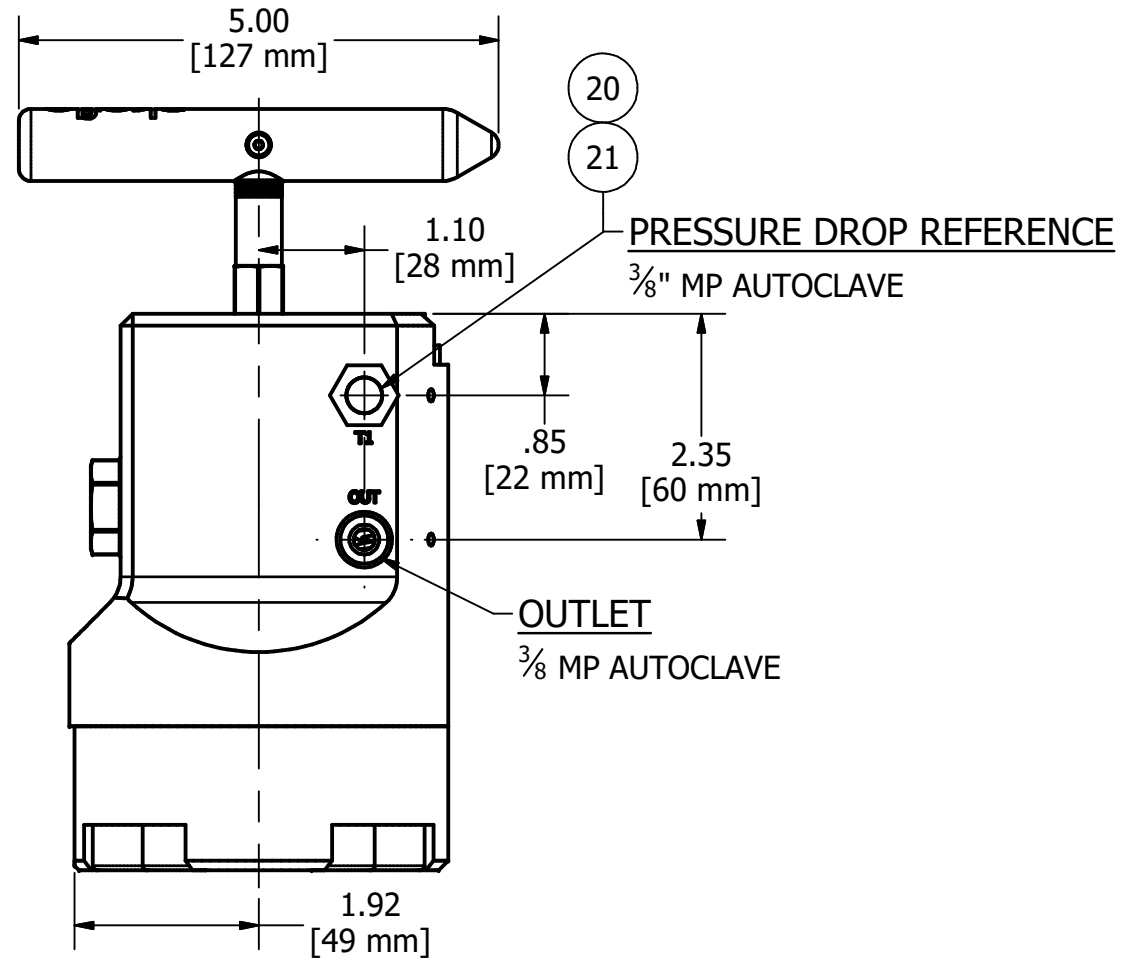
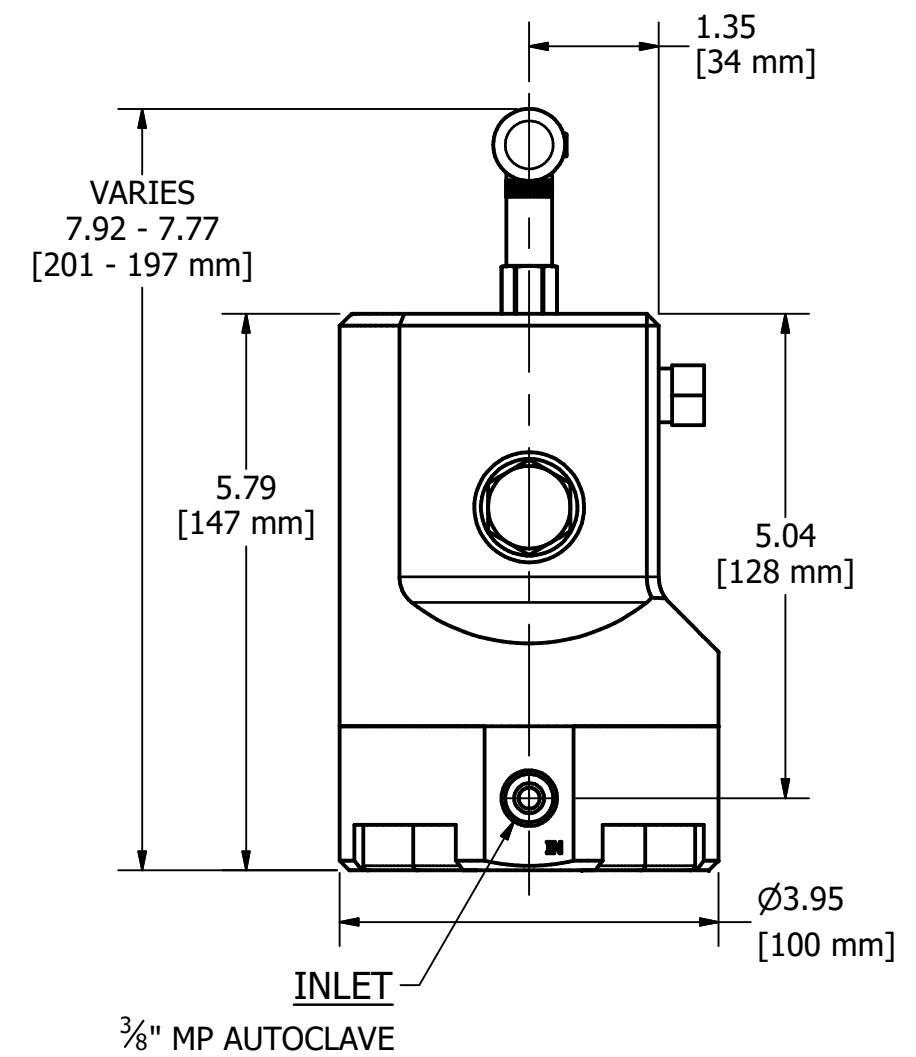
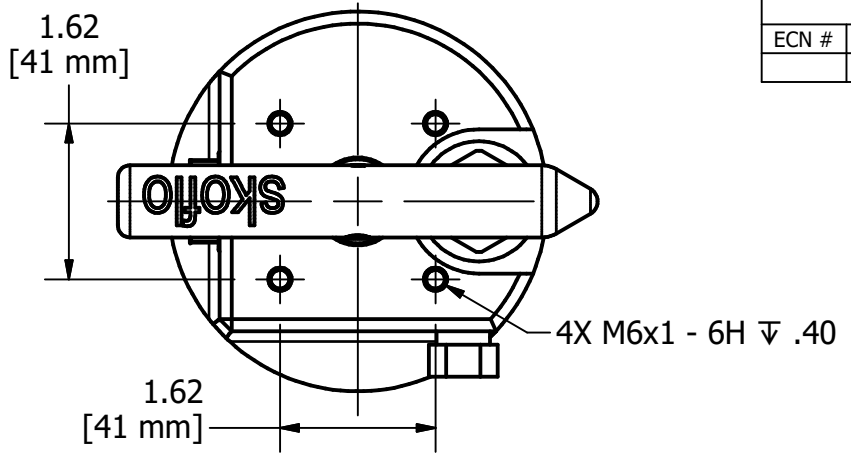


REVISION HISTORY							
ECN #	REV	DESCRIPTION	DATE	DRAWN	ENG1	ENG2	OTHER
	A	INITIAL RELEASE	2/12/19	JM	NA	JCD	



- NOTES:
- 1) NOMINAL WEIGHT = 18.1 lb [8.2 kg]
 - 2) RATED WORKING PRESSURE = 10,000 psi [689 bar]
 - 3) PROOF TEST PRESSURE = 15,000 psi [1034 bar]
 - 4) FLOW RATE RANGES:
 - a) 1 - 600 gpd
 - b) 50 - 2,500 gpd

ALL DIMENSIONS IN INCHES UNLESS OTHERWISE SPECIFIED	DRAWN J. MOORE 2/12/19		SKOFLO INDUSTRIES, INC. WOODINVILLE, WA
DRAWING PER ANSI Y14.5M-2009	ENG1 N. ALLEY 2/12/19		
FRACTIONS ± 1/16 X ± .03 .XX ± .010 .XXX ± .005 X.XX ± .0005 ANGULAR ± 3°	UNLESS SPECIFIED DEBURR & BREAK EDGES: 0.15/0.05 Ra SURF. QUAL: 63 FILLETS: R.020/0.008 DRILL POINT: 110-150°	VALVE ASSEMBLY, SURFACE, SF10000HTVA, MANUAL	ENVELOPE DRAWING SF10000HTVA-MA
	ENG2 J. DUSHLETTA 2/12/19 OTHER	THIS DOCUMENT CONTAINS INFORMATION WHICH IS PROPRIETARY TO SKOFLO INDUSTRIES INC. THE INFORMATION CONTAINED HEREIN SHALL NOT BE DISCLOSED, DUPLICATED, USED IN WHOLE OR IN PART FOR ANY PURPOSE OTHER THAN TO EVALUATE THIS DOCUMENT	DWG NO SF10000HTVA-MA REV A
	SIZE B SCALE NONE SHEET 1 OF 2		

CONFIGURATION NUMBER GUIDE

SF10000HTVA	XXXX	XXXX	X	MA
	1-600gpd	600D	L	LIGHT SPRING
	50-2500gpd	2500D	M	MEDIUM SPRING
			H	HEAVY SPRING

PARTS LIST				
ITEM	QTY	PART NUMBER	DESCRIPTION	MATERIAL
1	1	30426	PLUG, GATE PAD, SURFACE HTV	NITRONIC 50 HS
2	1	30427	BUSHING, STEM, SURFACE HTV	NI-AL-BRZ
3	2	30431	GUIDE RING, GATE, SURFACE HTV	PEEK
4	1	30432	GUIDE RING, STEM, TOP, SURFACE HTV	PTFE
5	1	30433	RETAINER, SEAT, SURFACE HTV	316 SS
6	1	30435	HANDLE, SURFACE HTV	316 SS
7	1	30471	PIN, CERAMIC, .165	ZIRCONIA 3Y-TZP
8	1	30512	PAD, GATE, SURFACE HTV	ZIRCONIA 3Y-TZP
9	1	30513	SPRING, BELLEVILLE, STACK 5	INCONEL 718
10	1	30617	CAP, HPS	NITRONIC 50 HS
11	1	30618	NEEDLE, LF, HPS, 20°	CARBIDE BC-6N
12	1	30623	SEAT, Ø.250, HPS	CARBIDE BC-6N
13	1	30626	RETAINER, SEAL, HPS/ HTV	316 SS
14	1	30653	NUT, RETAINER, SEAT, HPS	316 SS
15	1	30655	BODY, 10KSI, SURFACE HTV	NITRONIC 50 HS
16	1	30869	RETAINER, SEAL, GATE PAD, HTV	316 SS
17	1	30877	BASE, SERIALIZED, 10KSI, HTV	NITRONIC 50 HS
18	1	30954	PISTON, STOP VERSION, HTV	NITRONIC 50 HS
19	1	71001948	SPIRAL RING, WST-118-S16	316 SS
20	1	71002083	3/8 AUTOCLAVE PLUG	316 SS
21	1	71003288	3/8 MP AUTOCLAVE GLAND NUT	316 SS
22	8	71005549	SHCS, M12 X 1.75 X 40	A4-70
23	1	71006907	SPRING, COIL, Ø.258 X 1.02, PISTON	ELGILOY
24	1	71006956	SL, O-RING, 1.2mm CS X 6mm ID	EPDM
25	1	71006962	SL, CUP, PISTON, HTD, FCM	SEE DRAWING 71006962
26	1	71006998	SL, BU RING, .304 ID X .053W X .050T	PTFE
27	1	71007029	SPRING, WASHER, Ø.845 X Ø.280 X .05	INCONEL 718
28	1	71007034	SL, C-RING, EXTERNAL PRESSURE, ECE-000711-05-14-8-SPC	INCONEL 718
29	1	71007036	SL, CUP, CANT SPRING, Ø.250 ID, FC1N1229	SEE DWG 71007036
30	1	71007037	BOLT, SHOULDER, Ø4MM X 12MM LG, M3X0.5	18-8 SS
31	1	71007048	SPRING, COIL, Ø.250 X 1.00, GATE PAD	ELGILOY
32	1	71007113	SL, CUP, .408 ID, FS032029-2	SEE DWG 71007113
33	1	71007136	SLRG, INTERNAL, Ø.875, FHL-94-HAS	HASTELLOY C-276
34	1	71007137	SLRG, EXTERNAL, .375, WSM-37-S16	316 SS
35	1	SEE TABLE 1	SL, O-RING, 2-010	SEE TABLE 1
36	1	SEE TABLE 1	SL, O-RING, 2-011	SEE TABLE 1
37	2	SEE TABLE 1	SL, O RING, 2-013	Chemraz 510
38	1	SEE TABLE 1	SL, O-RING, 2-018	SEE TABLE 1
39	1	SEE TABLE 1	SL, O-RING, 2-021	SEE TABLE 1
40	1	SEE TABLE 1	SL, O-RING, 2-030	SEE TABLE 1
41	1	SEE TABLE 1	SL, O-RING, 3-906	SEE TABLE 1
42	1	SEE TABLE 1	SL, O-RING, M5 X 1	SEE TABLE 1
43	1	SEE TABLE 2	GATE, COATED, SURFACE HTV	NITRONIC 50 HS
44	1	SEE TABLE 2	GUIDE RING, STEM, BOTTOM, SURFACE HTV	PTFE
45	1	SEE TABLE 2	SEAT, Ø.050, PILL STYLE, Ø.200 X .100	ALUMINA-CERAMIC
46	1	SEE TABLE 2	STEM, SURFACE HTV	NITRONIC 50 HS
47	1	SEE TABLE 2	PIN HOLDER, HTV	NITRONIC 50 HS
48	1	SEE TABLE 3	SPRING, COIL, HPS	ELGILOY

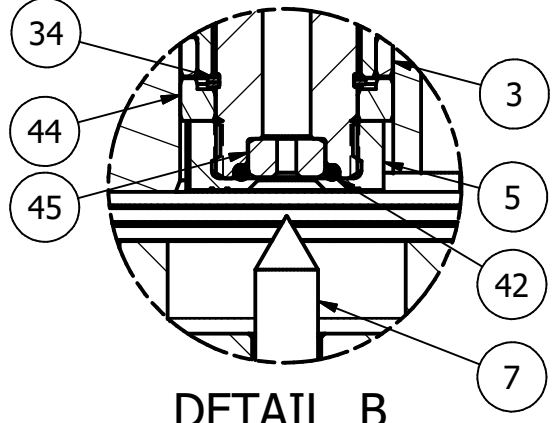


TABLE 1: SEAL SELECTION

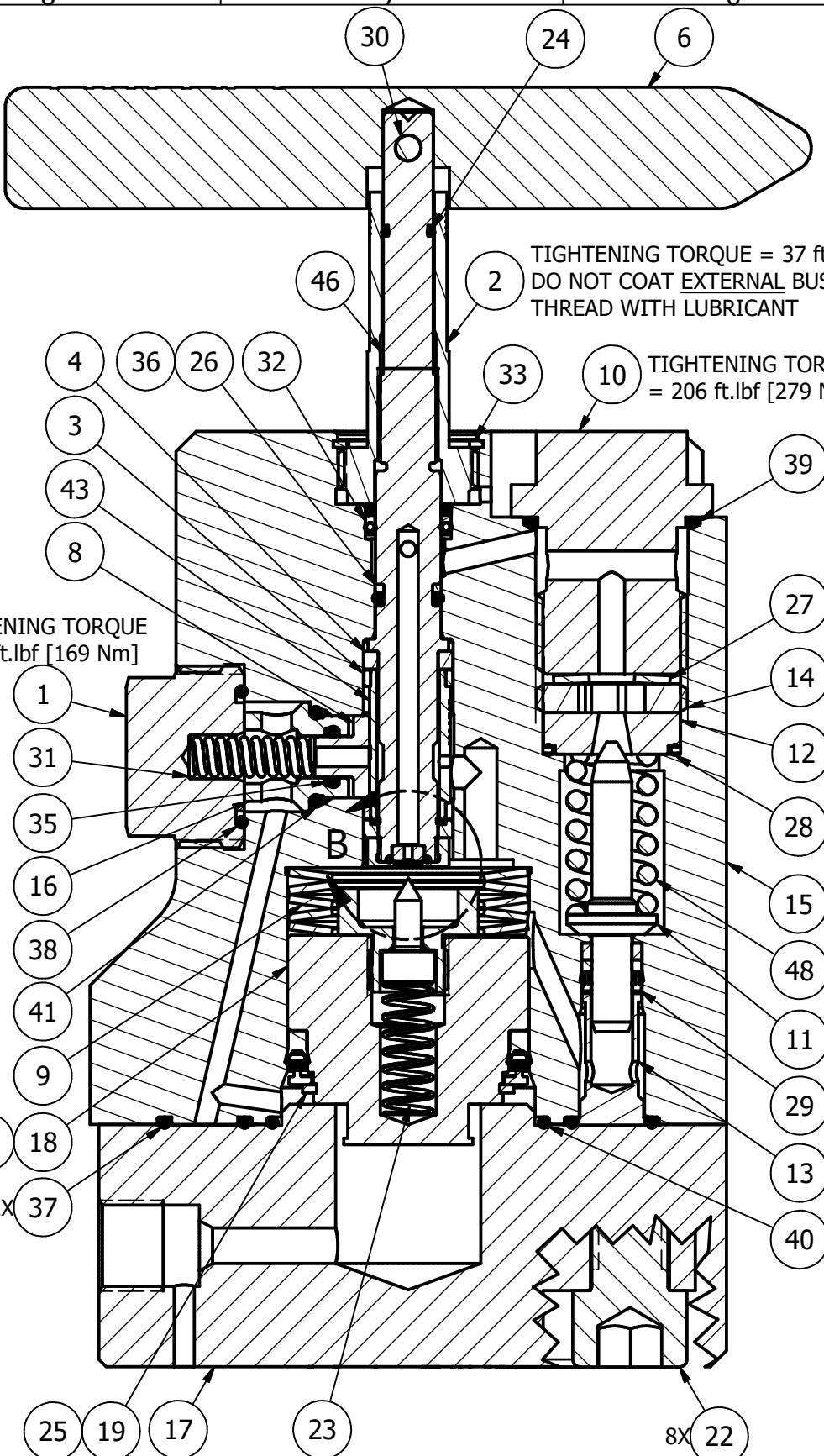
ITEM	EPDM	FFKM	DESCRIPTION
35	71001738	71006901	SL, O-RING, 2-010
36	71006952	71001744	SL, O-RING, 2-011
37	71001748	71001752	SL, O-RING, 2-013
38	71001766	71001769	SL, O-RING, 2-018
39	71007240	71006260	SL, O-RING, 2-021
40	71005377	71005574	SL, O-RING, 2-030
41	71006912	71001820	SL, O-RING, 3-906
42	71006954	71006953	SL, O-RING, M5 X 1

TABLE 2: FLOW RATE RANGE SELECTION

ITEM	1-600gpd	50-2500gpd	DESCRIPTION
43	30428	30831	GATE, COATED, SURFACE HTV
44	30828	30826	GUIDE RING, STEM, BOTTOM, SURFACE HTV
45	30470	30516	SEAT, PILL STYLE
46	30415	30514	STEM, SURFACE, HTV
47	30955	30959	PIN HOLDER, HTV

TABLE 3: HPS SPRING SELECTION

ITEM	LIGHT (L)	MEDIUM (M)	HEAVY (H)	DESCRIPTION
48	71007251	71007122	71007028	SPRING, COIL, HPS



SECTION VIEW

(SF10000HTVA-600D-XXXX-X-MA SHOWN) TIGHTENING TORQUE = 45 ft.lbf [61 Nm]

TIGHTENING TORQUE = 37 ft.lbf [50 Nm]
DO NOT COAT EXTERNAL BUSHING
THREAD WITH LUBRICANT

TIGHTENING TORQUE = 206 ft.lbf [279 Nm]

TIGHTENING TORQUE = 30 ft.lbf [40 Nm]

TIGHTENING TORQUE = 125 ft.lbf [169 Nm]

NOTES CONTINUED:
5) COAT ALL THREADS WITH DYNATEX ANTI-SEIZE & LUBRICATING COMPOUND (OR SIMILAR) UNLESS OTHERWISE STATED
6) LUBRICATE ALL SEALS WITH PARKER SLUBE 884-4 (OR SIMILAR)
7) SEE SF10000HTVA-SK FOR SPARES KITS PART LISTS

ALL DIMENSIONS IN INCHES UNLESS OTHERWISE SPECIFIED	DRAWN J.MOORE 2/12/19	SKOFLO INDUSTRIES, INC. WOODINVILLE, WA
DRAWING PER ANSI Y14.5M-2009	ENG1 N.ALLEY 2/12/19	
FRACTIONS ± 1/16	UNLESS SPECIFIED DEBURR & BREAK EDGES: 0.15/0.05 Ra SURF QUAL: 63 FILLIETS: R.020/0.08 DRILL POINT: 110-150°	VALVE ASSEMBLY, SURFACE, SF10000HTVA, MANUAL BOM DRAWING DWG NO SF10000HTVA-MA REV A SIZE B SCALE NONE SHEET 2 OF 2